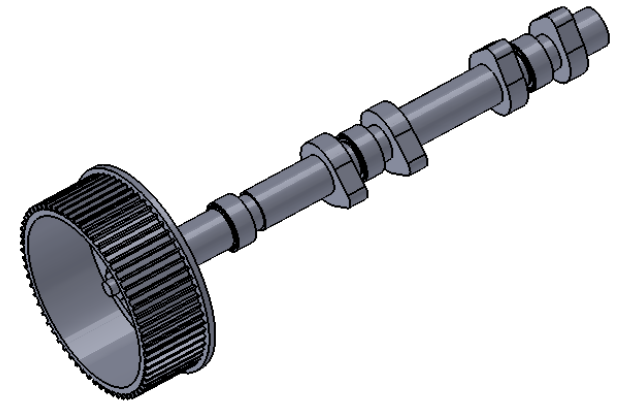


ITEM NO.	PART NUMBER	DESCRIPTION	QTY.
1	M3 x 112mm Rod	Threaded Rod	1
2	Exhuast Valve Lobe		4
3	Cam Spacer		1
4	Cam Spacer 4		1
5	Cam Spacer 3		1
6	Cam Spacer 2		5
7	Cam Gear 1	Use Cam Gear 2, 3, & 4 for the other three cams	1
8	623zz bearing		3
9	3mm washer		6
10	m3 jam nut		6
11	Cam Spacer 5	Use Cam Spacer 6 for passenger side head	1



SCALE 1 : 4

NOTE: Use 3mm washers to achieve proper spacing for bearings and lobes. All nuts should be have loctite on final assembly.

NOTE: Cam lobes and spacers are held together with m3 nuts. Assembly is done one peice at a time. If cam lobes don't like up, re index lobe on nut and retighten.

