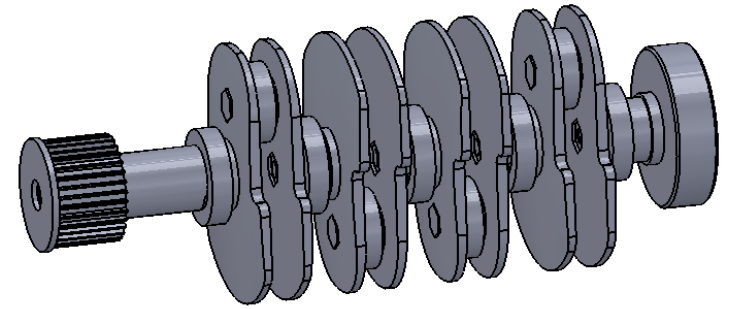


ITEM NO.	PART NUMBER	DESCRIPTION	QTY.
1	Crankshaft rear flange		1
2	Crankshaft Spacer	Might need to use different thickness spacers to achieve proper clearance.	4
3	m3 jam nut		9
4	m3 10mm SHCS		3
5	m3 35mm SHCS		1
6	m3 18mm SHCS		1
7	M3 x 9mm Hex Head Screw		4
8	Crankshaft 5		2
9	Crankshaft 6		5
10	Crankshaft 7		1
11	Crank Gear		1
12	6701zz Bearing		5
13	6700zz Bearing		4
14	Connecting rod bearing cap		4
15	Connecting rod		4
16	m3 12mm SHCS		8



SCALE 1 : 4

NOTE: Make sure all holes remain concentric with their respected parts while finishing.

Crankshaft part alignment is achieved by test fitting parts and then clocking part on the hex nut or hex bolt. Once proper alignment is achieved, apply super glue to Crankshaft Spacer and thread locker to fastener.

Test fit crankshaft in engine block for proper clearance

